

# Whanganui Regional Diabetes Contract

**Annual Report**

# Highlights

- **Establishment of Diabetes Nurse Educator “in training”**
- **Additional Podiatry Clinics**
- **Diabetes Nurse Educator and Podiatrist joint clinic approach**
- **Whanganui Diabetes Strategic Development – Synergia Report**

# Highlights

- **Roll Out of Read Code Project**
- **Grab a Bite That's Right programme**
- **Research Paper on Diabetes Contract**
- **Pasifika Healthy Lifestyle Workshops**
- **Expand Diabetes Clinical Governance**

# Performance – Annual Diabetes Checks

**Maori achieved 84.3% of DHB target**

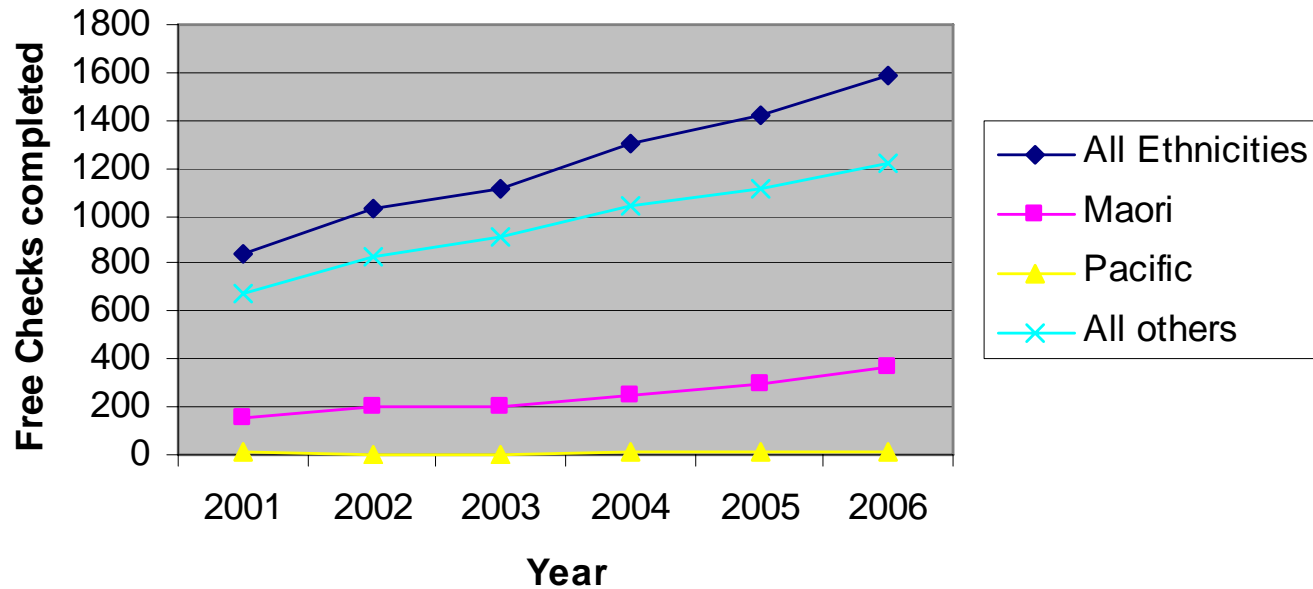
**2005: 294**

**2006: 375**

**Other ethnic group achieved 118.7% of DHB target**

**Overall 108% achievement of target**

## ADC trend for Wanganui



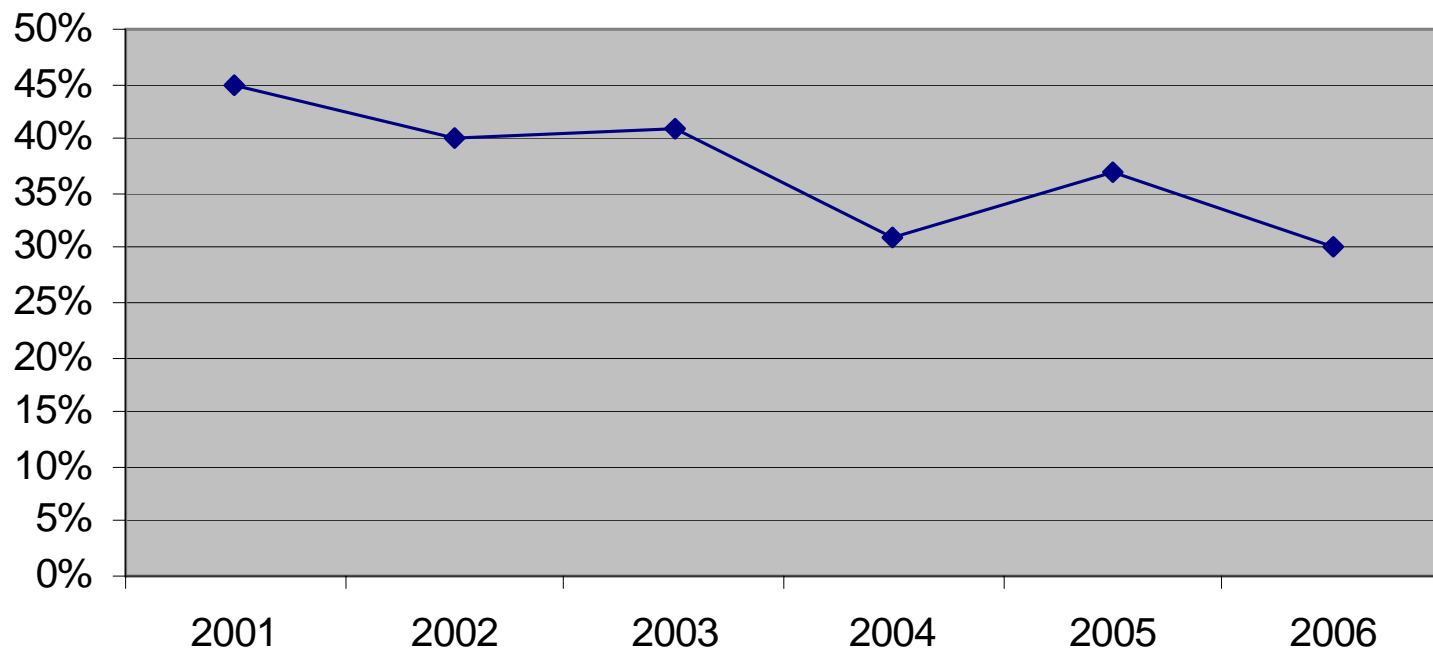
**Proposed Target for Maori Annual Diabetes Checks in 2007: 60% of expected number of people with diabetes in our region**

# Performance – Diabetes Management

## Diabetes Management – HBA1c >8%

- 2006 DHB target <35%
- WRPHO 2006 result: 30%
- Recommended target for 2007: 25%

## Percentage of Maori with Poor Diabetes Control



# Performance – Retinal Screening

<b>Retinal Screening</b>			
	<b>2006 Target %</b>	<b>2006 performance</b>	<b>2007 targets</b>
Māori	80%	75%	90%
Pacific	80%	60%	90%
All others	80%	75%	90%
<b>Total</b>	80%	70%	90%

# Lessons Learnt over 2006

- **High demand for Podiatry Service**
- **Need to integrate with Iwi in rural areas**
- **Provide feedback to GP's about patients overdue for an ADC**

# Plan for Service Going Forward

- **Move Retinal Screening Contract to within the Diabetes Programme**
- **Increased collaboration with Rural Iwi to improve access**
- **Revised Education session content and delivery**
- **Joint Podiatry and Diabetes Nurse Educator clinics**

